



Leigh Academy
Molehill



Prospectus



Leigh Academy Molehill is part of Leigh Academies Trust



Leigh Academies Trust is one of the country's largest and most-established multi-academy trusts operating across Kent, Medway and South East London. It contains primary, secondary and special academies and is highly inclusive and successful. Our mission is to deliver "education for a better world" by ensuring that young people in our academies have an excellent start in life regardless of their background or ability.

Our Values

We care -

about our pupils through our human scale approach to education, our staff and their well-being and the communities that we serve, driven by our high ideals and strong moral values.

We have boundless ambition -

to achieve excellence for all and create confident young adults with high levels of resilience and integrity.

We work together -

as one team in the belief that we are greater than the sum of our parts. We foster an enterprising culture through collaboration and in close partnership with industry and other educators.

We keep getting better -

using our 'can-do' attitude towards continuous improvement and innovation.



For admission enquiries telephone:
01622 751729 or email: info@molehill.latrust.org.uk

Contents

Use our contents page to navigate your way through our prospectus

Principal's welcome

A message from Mrs Laura Smith

Introduction

Our Nursery

Little Moles Nursery

School curriculum

Breakfast club

Join peers for breakfast before school

The International Baccalaureate Primary Years Programme

Molehill follows the IB PYP specifically designed for pupils aged 3-12

The International Baccalaureate Learner Profile

Giving pupils the opportunity to develop their personal and social attributes throughout their primary education

Special Resource Provision

Our specialist speech and language unit

Forest School

Exploring the natural environment

Further information

Find our Open Events and more

Welcome



‘Leaders have created a strong culture of learning and nothing is allowed to disrupt this.’

‘Teachers are well equipped to make the right adaptations for pupils, including those with special educational needs and/or disabilities.’

Ofsted

Mrs Laura Smith
Principal



Welcome to Leigh Academy Molehill

Teachers have embedded a culture of high expectations at Molehill; we will all do whatever it takes to create better life opportunities for our children who deserve the very best. We care about our pupils and the communities we serve and driven by our strong moral purpose, we work together to achieve excellence for all, creating confident, resilient children.

As parents, you are your child's first teachers and will always be the most important role models in their lives. We are looking forward to developing a partnership with parents to provide pupils with a wide range of different learning opportunities, matched to their individual needs and requirements. Throughout their time in the Early Years Foundation Stage your son or daughter will work towards achieving the Early Learning Goals. In addition, they will benefit from taking part in weekly Forest School sessions to play in and explore the natural surroundings. We embrace the outdoors as an inspirational learning environment. Our Academy is well equipped, with its own library, dining hall, assembly hall, sports field and a vast outdoor environment, which includes a woodland area.

Our pledge to parents is that we will provide every pupil with the knowledge, skills, self belief and motivation to be successful in their learning and lives. At Molehill, we promote the International Baccalaureate Learner Profile Attributes to support the development of life-long learners. Our pupils are inquirers, our curriculum develops their natural curiosity and allows them to apply their thinking skills creatively. We strive to ensure that, through our excellent teaching, pupils become highly articulate communicators, who act with integrity and honesty. Our pupils demonstrate on a daily basis that they are caring individuals, and they, like us, want to make a positive difference to the lives of others.

Introduction

The Academy was opened in 1954 to serve the southern part of the Shepway Estate and the roads leading to it. It caters for boys and girls from the age of three to eleven years. It stands on beautiful grounds that we have developed especially to aid curriculum studies.

At Leigh Academy Molehill we have created a culture that enables both pupils and staff to thrive and achieve their very best.



Parent Testimony

'We strongly recommend Leigh Academy Molehill. Even though we didn't have this school on our list, we are more than grateful with how our son is accommodated within their lovely team. We are impressed by everything they do there; from lunch menus, breakfast club to communication with parents. We had all the support from our son's teacher and she was there for us when we needed and had all different kinds of worries during these unpredictable times. She always put our mind at ease and explained to us what are the most important things for our son at this age. Thank you Leigh Academy Molehill for welcoming our son into your family and for everything you are doing for our children!'

Relationships between staff at all levels and the children are highly positive and this creates a warm and vibrant atmosphere in lessons and during social times. With the support and guidance of leaders, teachers provide well-organised, calm and purposeful classrooms in which children can enjoy their learning challenges. High expectations permeate the school with regards to both learning and behaviour. Pupils and teachers across the Academy take pride in the school and their individual areas of responsibility.

The positive and caring ethos at Molehill is combined with a clear, relentless focus and an ambition that all pupils can and will achieve well, regardless of their different starting points.

There is a strong sense of community at Molehill which grows each year. We work with a range of community groups with the aim to both gain and offer support. Pupils have an ever-growing sense of being part of a range of communities and the roles they play in these. We work closely with the local police and church leaders to ensure that pupils build positive relationships with other professionals. Equally, Governance is a strength of the academy both at local and Trust level.



Our Nursery Little Moles

Start your child's learning adventure in a vibrant, safe, well-equipped environment, with stunning outside spaces for them to explore.

Our Nursery provides care for children from the age of 3 years and is open Monday to Friday 9.00am – 3.30pm. We accept the 15 and 30 hours of free funding from the term after your child's third birthday.

All three and four year olds in England currently receive 15 hours a week government funded early education. If parents live and work in England, three and four year olds may be entitled to 30 hours funded childcare per term time week. If you are eligible you will be entitled to access the 30 hours from the start of the term after your child's third birthday.

Children are natural inquirers from birth. They have the innate ability to learn about, engage with and interpret the world around them. Our pupils are curious and capable learners with a strong sense of agency; our school community recognises the importance of this stage of education. Experiences during the early years lay the foundation for all future learning. The brain and body develop faster than at any other point in a child's life. Social development happens in these early years as children explore, discover, play and to make connections. It is at this time that in play is the primary driver for inquiry. Through play, young children develop new approaches to learning and connect with key areas of their development.



Learning happens from the moment your child arrives. We ensure that your child fosters independence by giving them the space to take charge of their own belongings. We embed a routine to help your child feel secure in knowing what to expect and recognise what will happen throughout the day. Every morning we discuss the visual timetable together and it remains on display so that children can always return to look at what will happen next.

An important element of our day is when we discover who will be the Special Helper. These children have important responsibilities, such as carrying the register to the office and being a role model at the front of our class line when we are moving into the lunch hall.

Teachers create learning environments and experiences that are both adaptable and appropriate to young pupils; they adapt learning goals and intended learning experiences accordingly, based on their observations of learning and development.

School curriculum

Leigh Academy Molehill is an IB World School.

At Leigh Academy Molehill we follow the National Curriculum with the International Baccalaureate Primary Years Programme as a framework and vehicle for learning. The National Curriculum outlines the skills and knowledge which will be acquired by the time our children leave primary school; the PYP is a way of framing learning in order to help children develop holistically as well as academically.

Learning is organised into six 'Interdisciplinary Themes' which, alongside the learner profile, provide children opportunities to acquire the knowledge and develop the skills outlined in the National Curriculum with an overall view of creating conscientious global citizens.

Pupils embark on lines of inquiry stemming from a central idea. Within the context of the Central Ideas, learners acquire the ability to demonstrate and recognise the IB Learner Attributes. The attributes promote learners to be inquirers, knowledgeable, thinkers, communicators, principled, open-minded, caring, risk-takers, balanced and reflective. The ethos behind the programme is to create lifelong learners who 'develop inquiring, knowledgeable and caring young people who help to create a better and more peaceful world through intercultural understanding and respect'.



Breakfast club

At Leigh Academy Molehill we provide a healthy breakfast for children, in a safe and secure environment, alongside activities that they can take part in before school.

Children arrive early and have their breakfast, then they have time to play. There are a variety of activities available each day such as board games, colouring and drawing. We also have a programme of events throughout the week including Mindful Monday, Choosing Tuesday, Wake Up Wednesday, Thoughtful Thursday and Film Friday.

Activities can include table tennis, table football, snooker/pool and regular craft sessions. We have volunteers who join us at the Breakfast Club to teach the children new skills such as table tennis and chess.

There has been a wealth of research into the benefits of children having a good breakfast. These include:

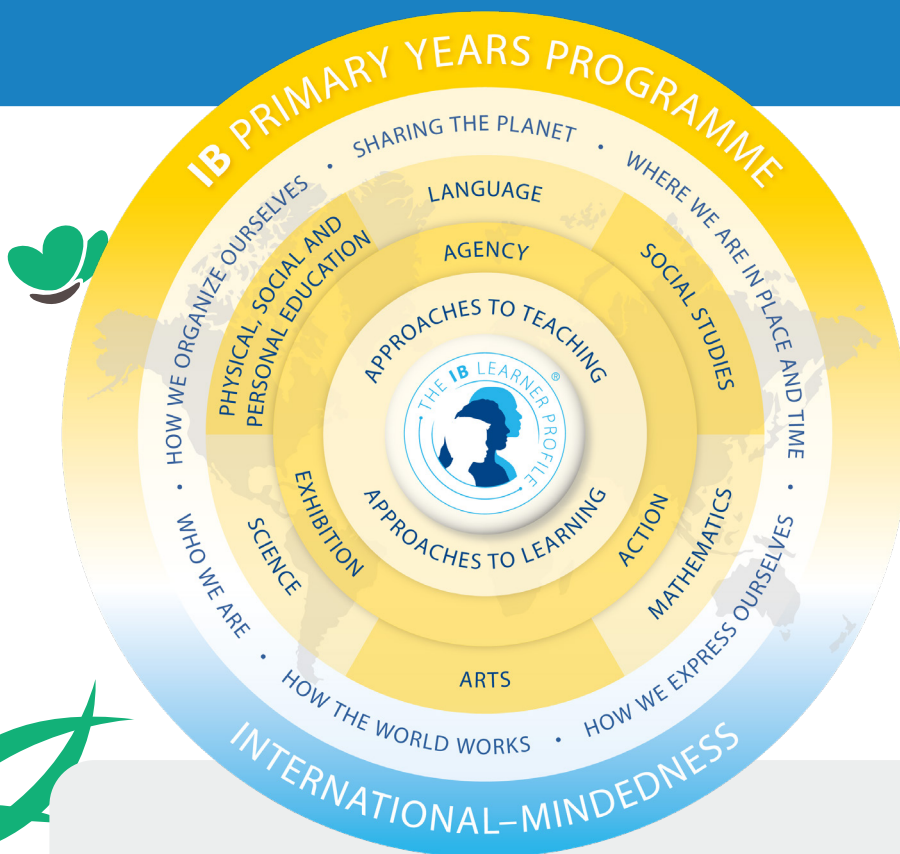
- Improved concentration
- Improved attendance and punctuality
- Better behaviour
- Improved attainment and achievement at school

The International Baccalaureate Primary Years Programme



© International Baccalaureate Organisation 2018

The Primary Years Programme (PYP) is designed for pupils aged 3 to 12 and is one of four programmes offered by the International Baccalaureate Organisation (IBO).



The PYP focuses on the development of the whole child as an inquirer, both in the classroom and in the world outside. It is a framework guided by six interdisciplinary themes of global significance, explored using knowledge and skills derived from six subject areas, as well as interdisciplinary skills, with a powerful emphasis on inquiry.

The PYP is flexible enough to accommodate the demands of the National Curriculum as this is the curriculum that Leigh Academy Molehill will follow. The PYP:

- Allows integrated development of cognitive and affective skills;
- Enables us to develop a curriculum appropriate to meet pupils learning needs;
- Develops autonomous and critical learners;
- Content is chosen by academies but is delivered within a concept driven curriculum to bring coherence across subjects; and
- Assessment drives learning and teaching positively.

Leigh Academy Molehill has been successful in authorization as an IB World School for the Primary Years Programme. These are schools that share a common philosophy: a commitment to high quality, challenging, international education that Leigh Academy Molehill believes is important for our students.

For further information about the IB and its programmes, visit www.ibo.org

The International Baccalaureate Learner Profile



The Learner Profile is at the heart of our curriculum and is integrated through every aspect of the curriculum, so that pupils have the opportunity to develop their personal and social attributes on a daily basis.

IB Programmes give structured opportunities for pupils to be:

- Inquirers
- Knowledgeable
- Thinkers
- Communicators
- Principled
- Open-minded
- Caring
- Risk-takers
- Balanced
- Reflective

We are also fortunate to provide our children with a 'forest school' ethos and provision as part of our education. Our trained practitioners enable us to develop additional learning and development opportunities that enrich our curriculum offer for all age groups.

At Leigh Academy Molehill we aim to create inquiring, lifelong learners who respect and care for the world they live in and all those who live in it. Our learners understand how they are connected to the world in order to take action to improve their own lives, and the lives of local and global communities, becoming global citizens themselves.



Specialist Resource Provision

Our Specialist Speech and Language Unit is a small resource based provision for up to 10 children from Reception to Year 6 who have an identified speech and/or language impairment identified as their primary area of need on their Education Health Care Plan (EHCP).

The children spend part of their timetable in the provision, working with our specialist teacher, our specialist teaching assistant, or with an NHS speech and language therapist. The children spend the majority of their day in their mainstream class and are with their friends at break and lunch times, so that they benefit from the independent learning and social opportunities that these activities bring.

Our aims are to:

- Promote the development of spoken language
- Support understanding of spoken language
- Support and develop communication to the best of individual children's abilities
- Enable all children to develop functional communication skills for life
- Give each child the opportunity to develop to their full potential academically, socially and emotionally
- Provide opportunities for the inclusion of all children in mainstream classes and school events
- Promote good home/school relationships
- Monitor and review pupil progress regularly, providing specific interventions where necessary

Our Hearing Impairment Provision is for children with an EHCP with severe to profound hearing losses from the age of five to eleven. Young deaf children are given the opportunity to listen, talk and learn through good amplification, specialist teaching and individual and small group work in good acoustic conditions. All of our children have Individual Education Plans which are discussed and reviewed with parents on a termly basis and we place a great deal of importance in developing good hearing aid management.



We provide a broad and balanced curriculum which includes the National Curriculum. Our experienced Learning Support Assistants support inclusion of children in mainstream classes.

All of our children have Individual Education Plans which are discussed and reviewed with parents on a termly basis. This involves:

- Listening and talking are central to all activities
- Specialist teachers
- Inclusion in mainstream classes
- Access to Speech and Language Therapists
- Children are encouraged to become independent learners
- Favourable staff-pupil ratios
- A friendly supportive school

Forest School

Forest School is a child-centred approach that takes place during regular visits to the wooded areas of the school. A small group of children work with the teachers, and supporting adults, in weekly sessions to play in and explore the natural environment. Basic resources, such as string, rope and tarpaulins, are provided and the skills to use them are taught as and when they are needed by the participants. As their skills grow, and when it is developmentally appropriate, more challenging skills may be taught.

Essential to Forest School Practice is a mutual relationship between the participants and the woodland itself. The Forest School Leader assumes responsibility for monitoring the ecological impact of activities and promotes an understanding of sustainability with all participants and the wider school community.

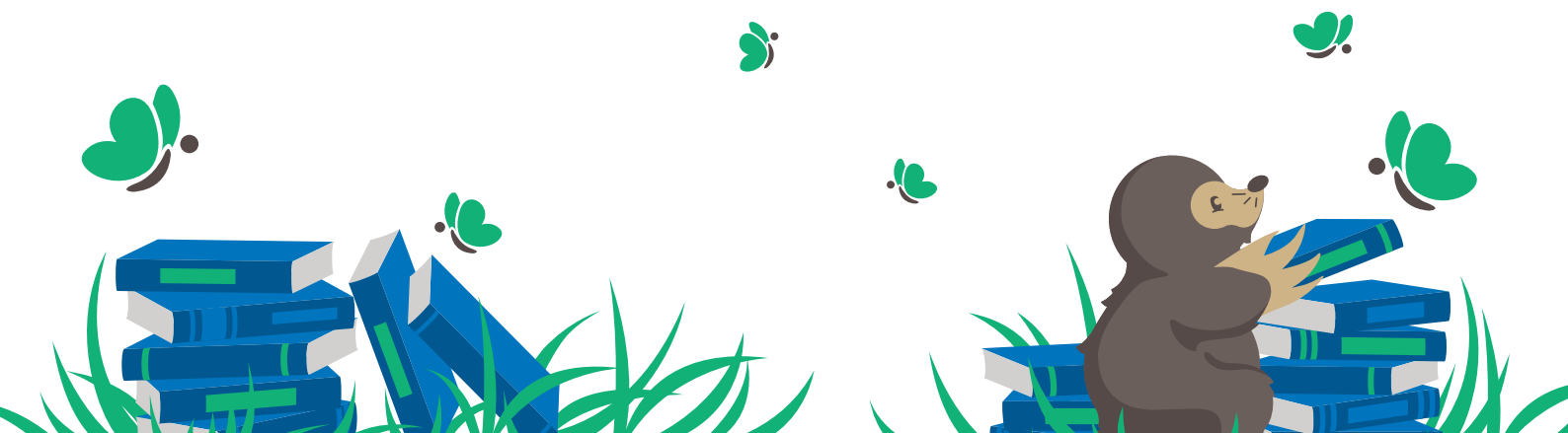


‘Leaders have designed
a broad and highly
ambitious curriculum
meticulously.’

Ofsted, June 2023



We hope you’ve enjoyed reading through our Primary
prospectus and we can’t wait to hear from you!
e: info@molehill.latrust.org.uk





Leigh Academy
Molehill

Further INFORMATION

Please visit our academy website

[Leigh Academy Molehill](#)

Virtual Open Event and Admissions
information

Find out when our next open event is

[Visit our website](#)

Apply for a place at Leigh Academy Molehill

To apply now, visit this link

www.kent.gov.uk/ola



Leigh Academy
Molehill

Hereford Road
Maidstone
Kent ME15 7ND

01622 751729
info@molehill.latrust.org.uk
leighacademymolehill.org.uk



LEIGH
Academies Trust

Education for a better world

Chief Executive: Simon Beamish BA (Hons) MSc PGCE NPQH NLE FCCT

Carnation Road, Strood, Rochester, Kent ME2 2SX
01634 412200 | fax: 01634 412201
info@latrust.org.uk | leighacademiestrust.org.uk

Leigh Academies Trust is a registered company (company no 2336587) and an exempt charity.